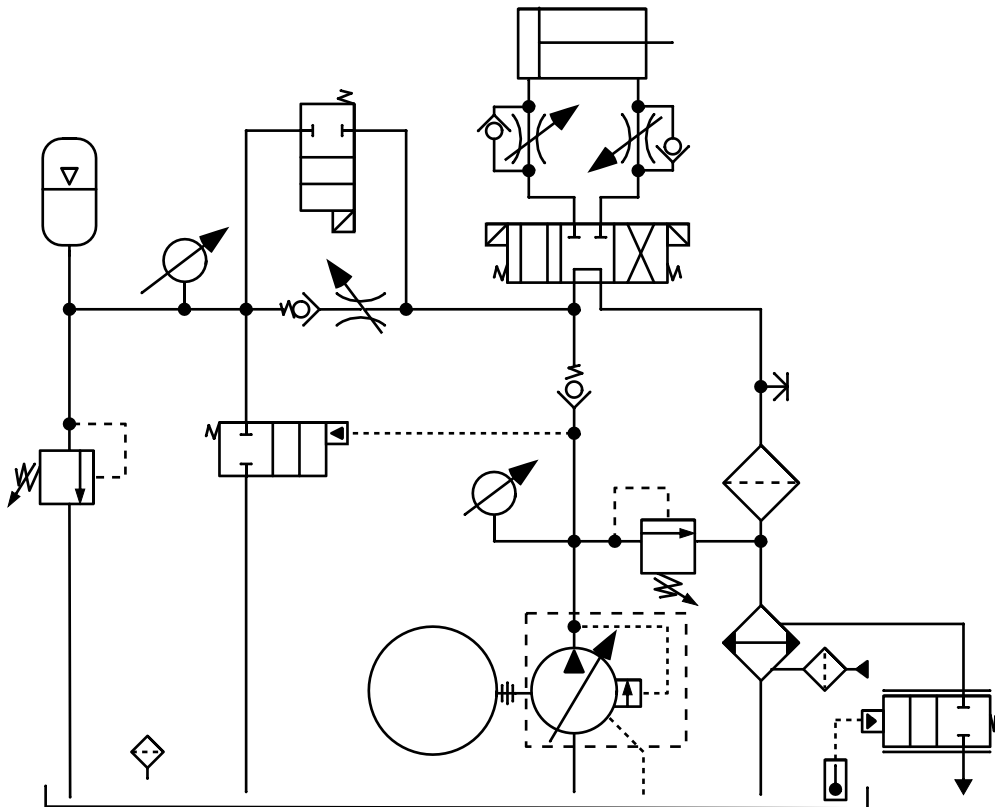


What Are Your Thoughts When You See This?



- 1) HOLY GUACAMOLE!!! What the heck is that?
- 2) Ummmm.... I'm pretty sure I understand some of it.
- 3) Gimme a minute or two and I should be able to figure it out.
- 4) Would you look at that? Either the person who drew this made a mistake, or the part of the circuit with the _____ isn't going to work right.
- 5) I wonder if load sensing would have eliminated the need for a heat exchanger?